



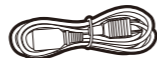
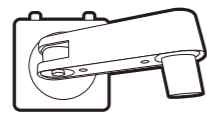
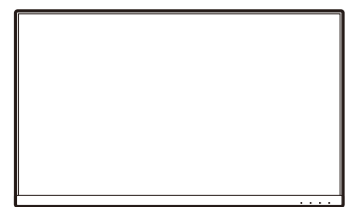
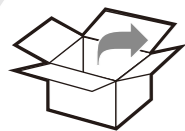
# LCD Monitor Quick Start Guide

DesignVue Designer Monitor | PD Series



DN: PD06UA-EQ-V0

© 2022 BenQ Corporation. All rights reserved. Rights of modification reserved.



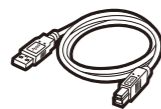
Hotkey Puck G2



HDMI



DP



USB



USB-C™



Quick Start Guide

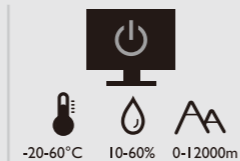
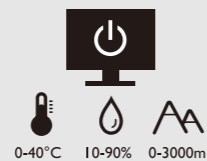


Regulatory Statements



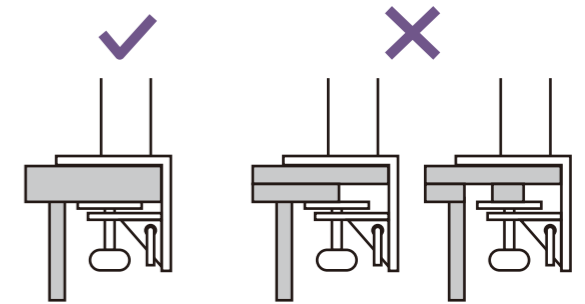
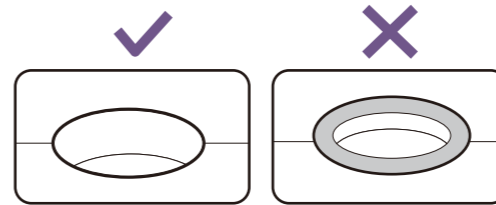
Safety Instructions

The terms HDMI, HDMI High-Definition Multimedia Interface, HDMI Trade Dress and the HDMI logos are trademarks or registered trademarks of HDMI Licensing Administrator, Inc.

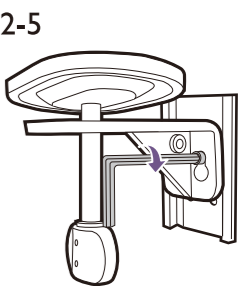
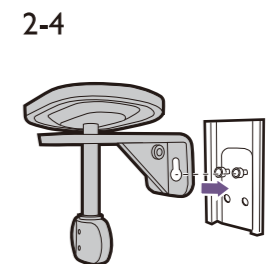
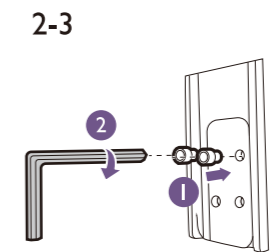
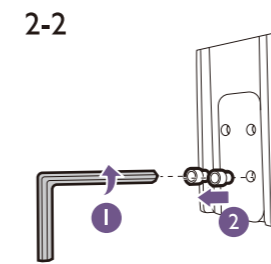
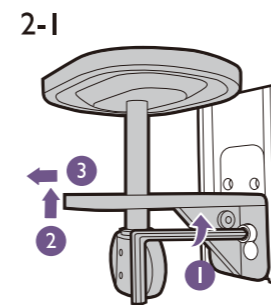
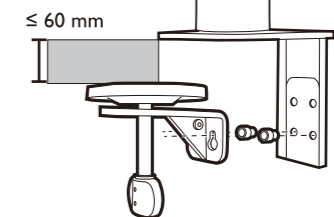
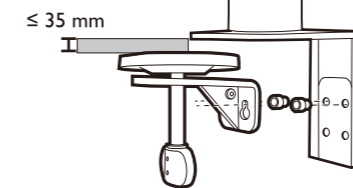


P/N: 4J.XXXXX.XXX

## 1 Mounting environment check



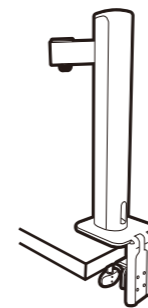
## 2 Desk thickness check



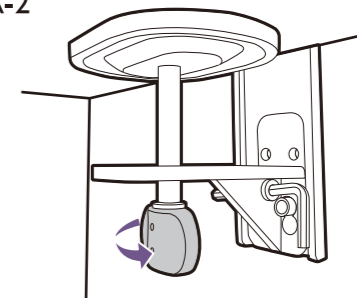
## 3 Stand installation

### A Clamp mounting

3A-1

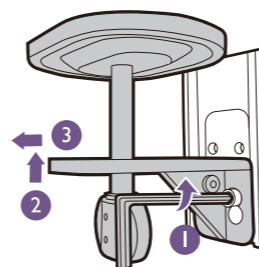


3A-2

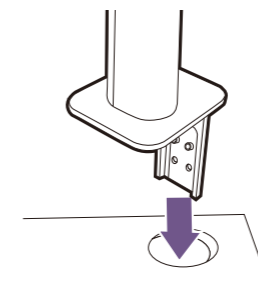


### B Grommet mounting

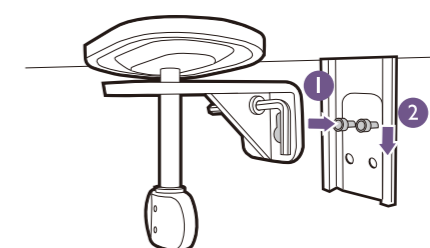
3B-1



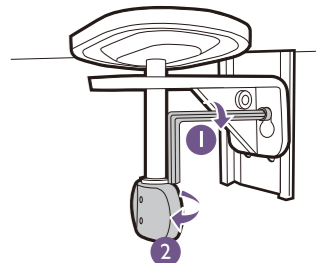
3B-2



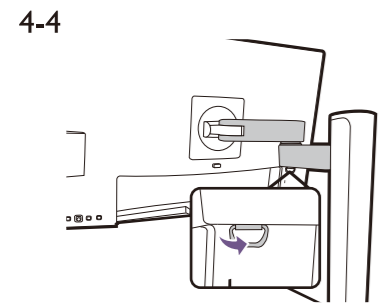
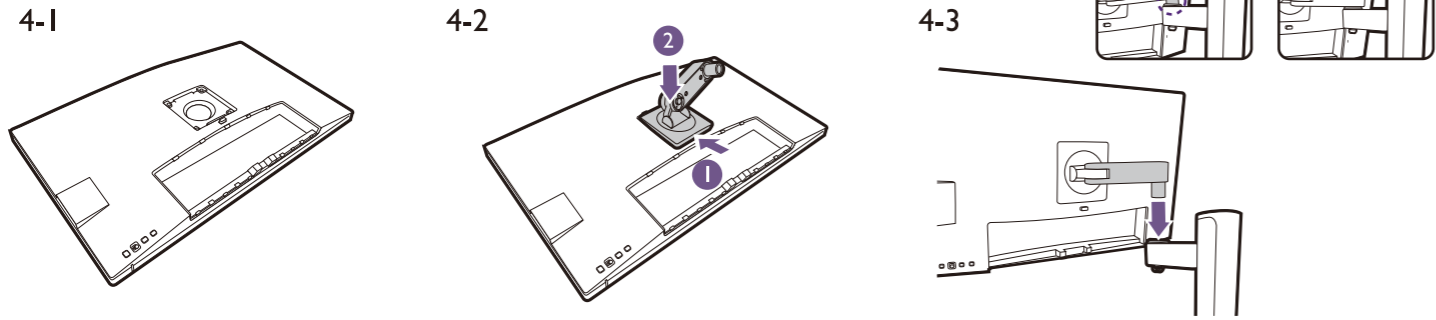
3B-3



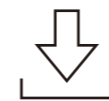
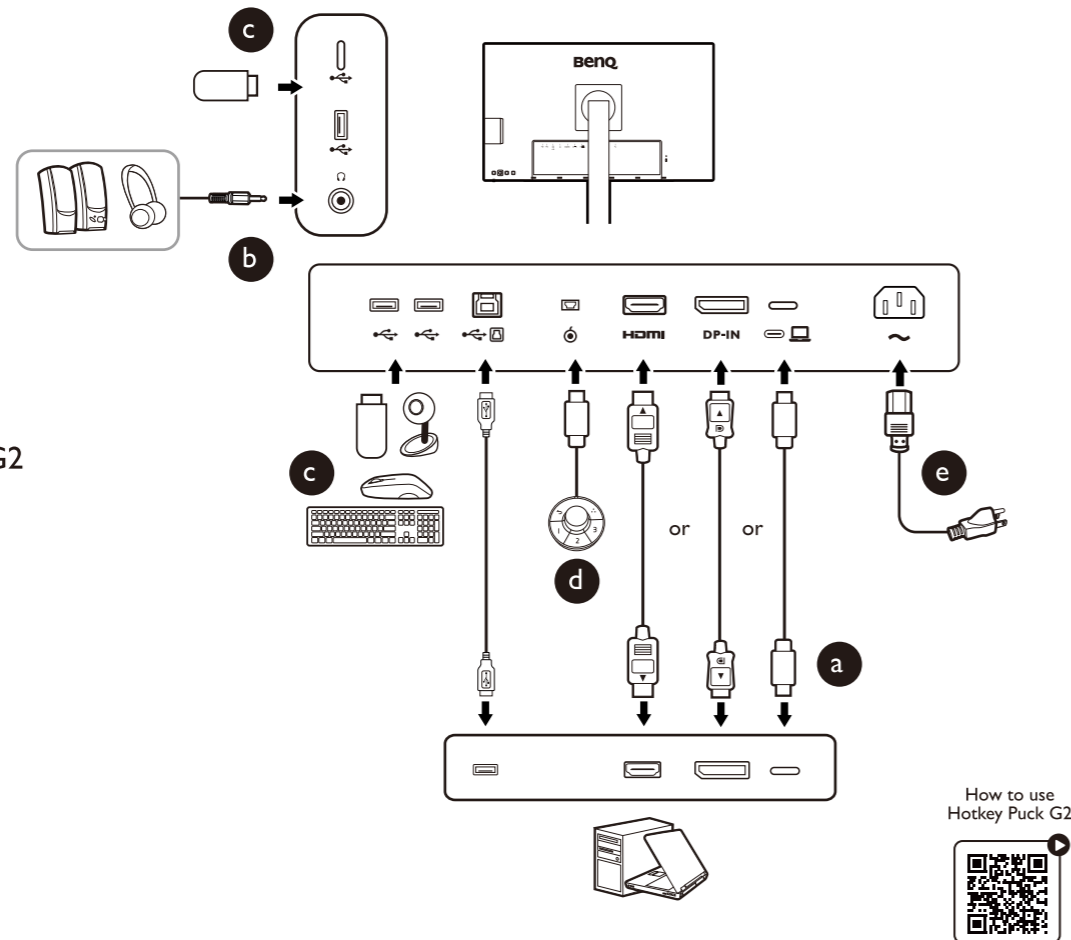
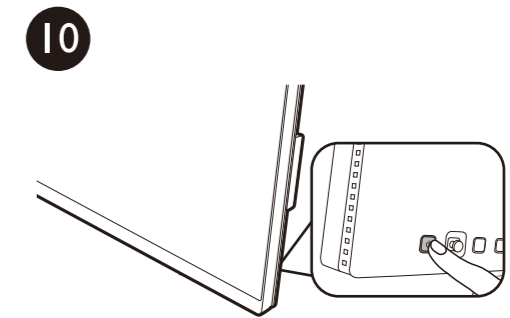
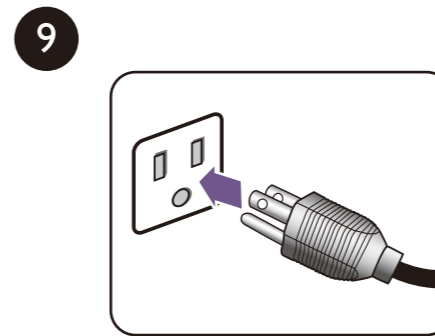
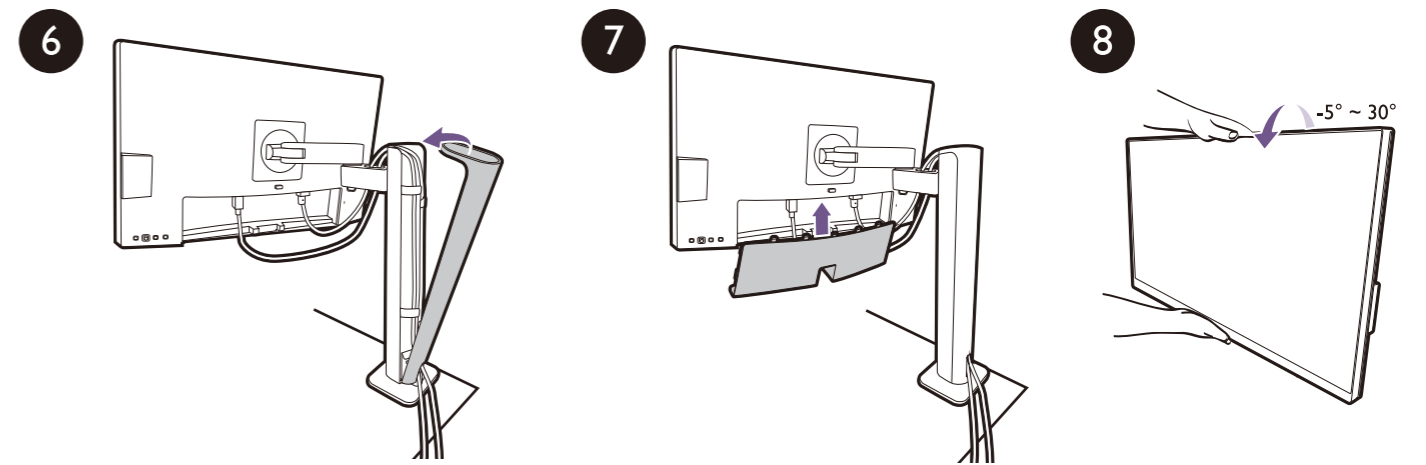
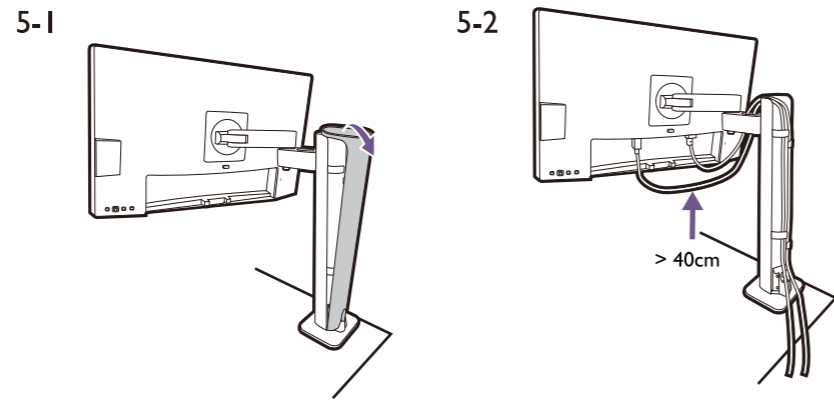
3B-4



## 4 Mounting the monitor head

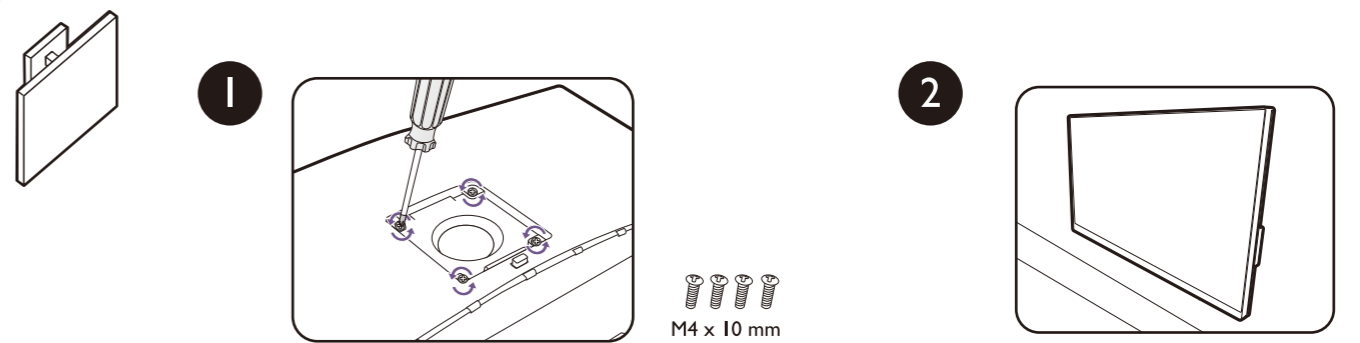
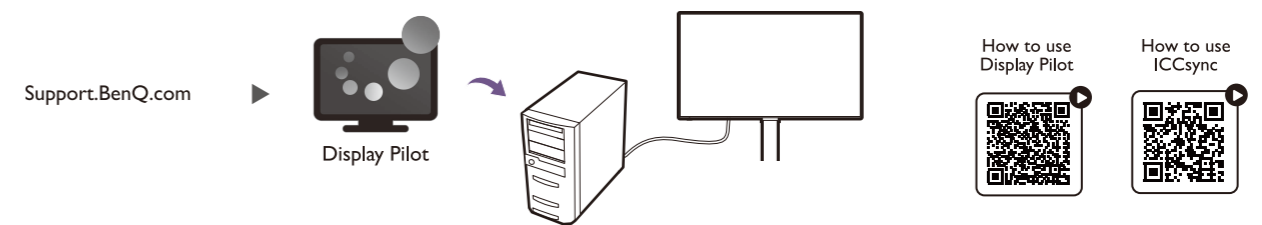


## 5 Cable connection and management

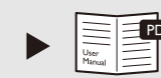


## Software installation

Display Pilot: for display arrangement & color matching (ICCsyntax)



Support.BenQ.com



Online Manual



Product Support



Software Download

For professional color display



CAD / CAM Mode



Animation Mode

For work efficiency



KVM Switch