



Recycle Disassemble Instruction (Dismantled Information)

**Requirements according to ANNEX VII of DIRECTIVE 2012/19/EU
on waste electrical and electronic equipment (WEEE)**

Materials and components with hazardous content

LCDs may contain hazardous substances like Pb and BFRs which are covered by exemptions under the RoHS directive. However, the majority is present in the printed circuit boards assembly. In order to reduce emissions as much as possible, a complete disposal of the old appliance is required. This treatment may only be performed in authorized handling plants.








Product Name: LCD Monitor

Model No.: SW240





Disassembly Tools

Tool	picture
Philips Screwdriver for M3 Screw	 A Philips screwdriver with a red handle and a silver shaft, lying horizontally on a light brown wooden surface.
Nosed Pliers	 A pair of red-handled nose pliers with long, thin jaws, lying horizontally on a light brown wooden surface.
Diagonal Cutting Pliers	 A pair of red-handled diagonal cutting pliers with short, thick jaws, lying horizontally on a light brown wooden surface.
Slotted screwdriver	 A slotted screwdriver with a green handle and a silver shaft, lying horizontally on a light brown wooden surface.
Six Point Sockets	 A six-point socket screwdriver with a yellow handle and a silver shaft, lying horizontally on a light brown wooden surface.
Philips Screwdriver for M2.5 Screw	 A Philips screwdriver with a red handle and a silver shaft, lying horizontally on a light brown wooden surface.
Knife	 A folding knife with a silver handle and a black blade, lying horizontally on a light brown wooden surface.



Disassembly process

1. Disassemble Stand

1.1 Remove base by pressing release Screw.



1.2 Remove ASSY CLMN by hand



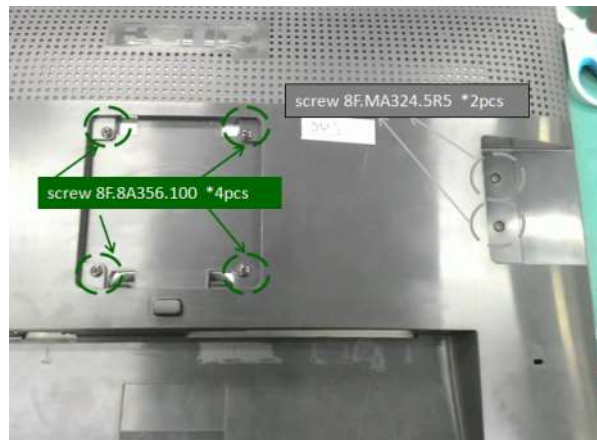
2. Remove ASSY Rear Cover

2.1 Remove Mylar USB by knife and hand

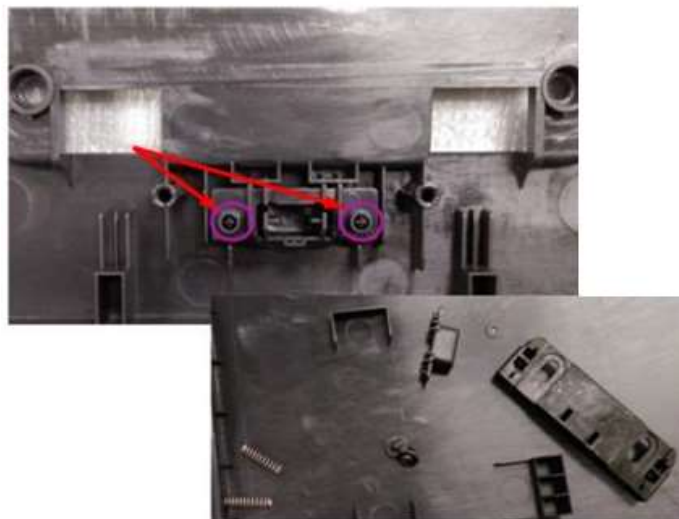




2.2 Remove screw to release Rear Cover.



2.3 Remove Slider module from RC by Screwdriver and hand



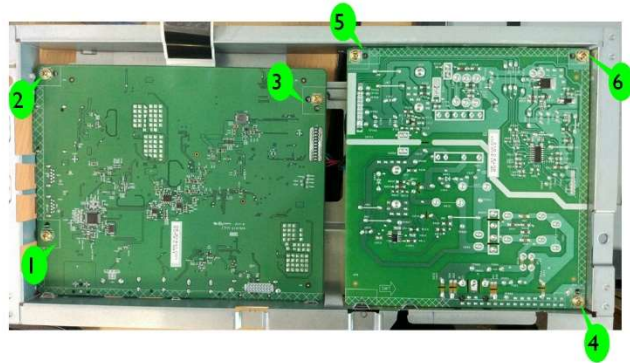
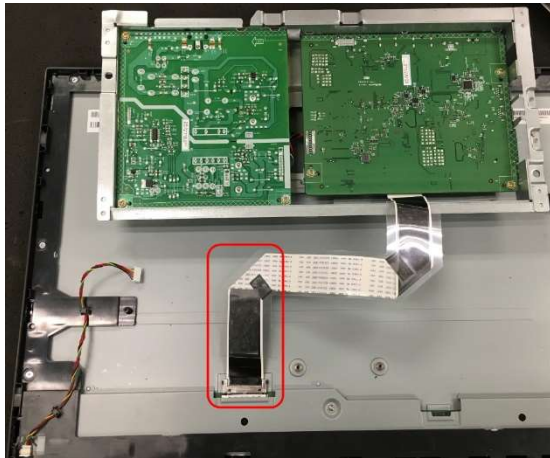
3. Remove SHD and PCBs

3.1 Remove lamp wire and ctrl BD FFC.

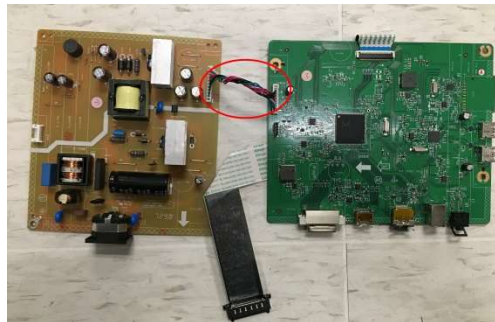




3.2 Remove LVDS from PANEL, and remove screw by screwdriver



3.3 Remove wire by hand

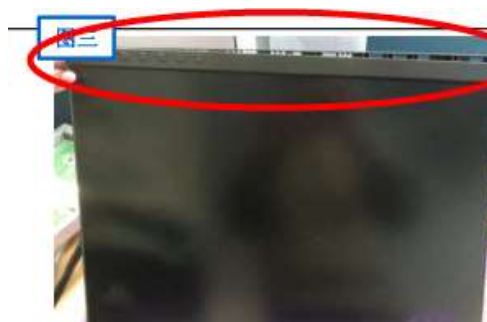


4. Remove MF and DECO from PANEL

4.1 Remove screw by screwdriver



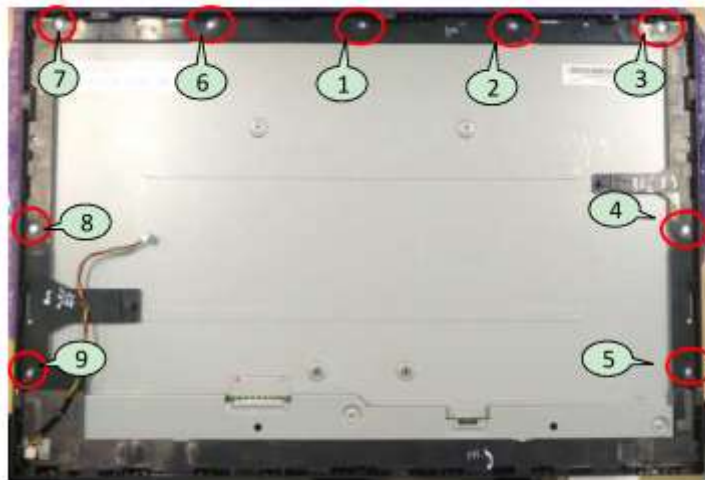
4.2 Remove DECO by hand



4.3 Remove CTRL BD FFC and CTRL BD by hand



4.4 Remove screw by screwdriver





Disassemble Hood

1. Remove cloth, rubber, and sponge by knife and hand from Hood side Right (R2)



2. Remove cloth and sponge by knife and hand from Hood side Left (L2)



3. Remove cloth and sponge by knife and hand from Hood top Right (RT)





4. Remove cloth and sponge by knife and hand from Hood top Left (LT)



5. Remove cloth and sponge by knife and hand from Hood side up Right (R1)



6. Remove cloth and sponge by knife and hand from Hood side up Left (L1)





7. Remove cloth and by knife and hand from Hood bridge Hor



8. Remove cloth by knife and hand from Hood bridge Ver



Disassembly Time

Total time: 30 minutes