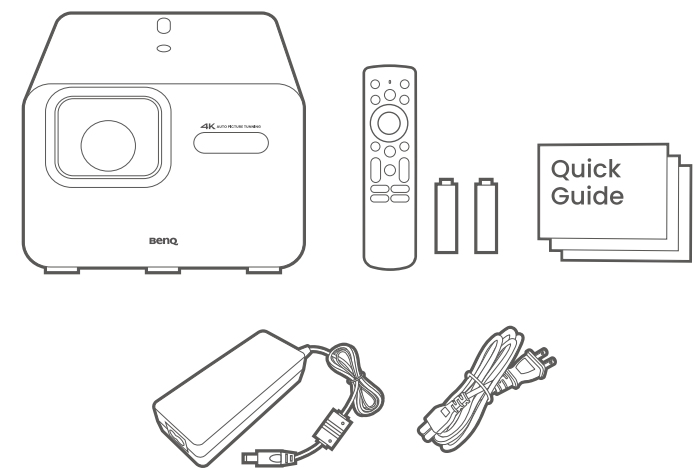


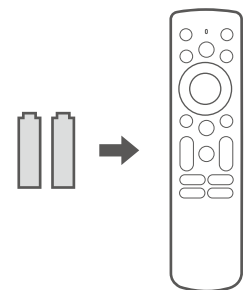
Package contents



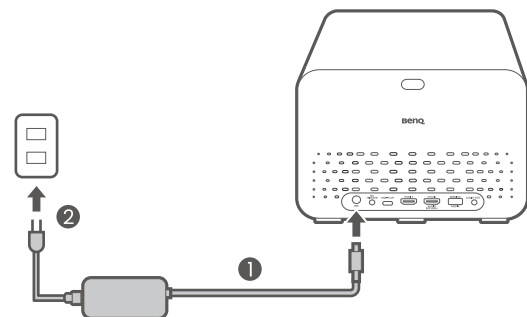
*Package contents may vary by region.

Setup

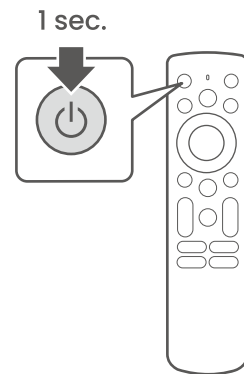
1



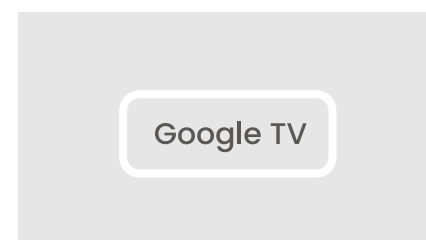
2



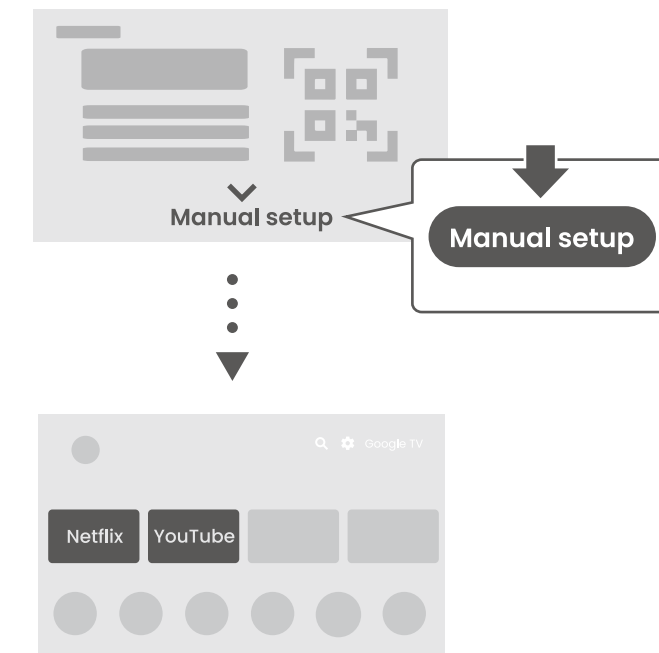
3



4



(Steps and images may differ by region. Follow the on-screen instructions.)



✓ All done. Enjoy!

Helpful apps

SmartRemote for BenQ Projector

1

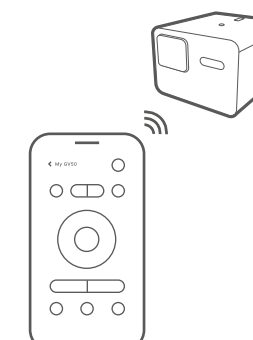
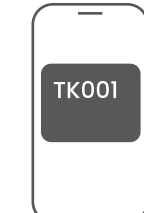


GET IT ON
Google Play

2



Download on the
App Store



(Availability may vary by region.)

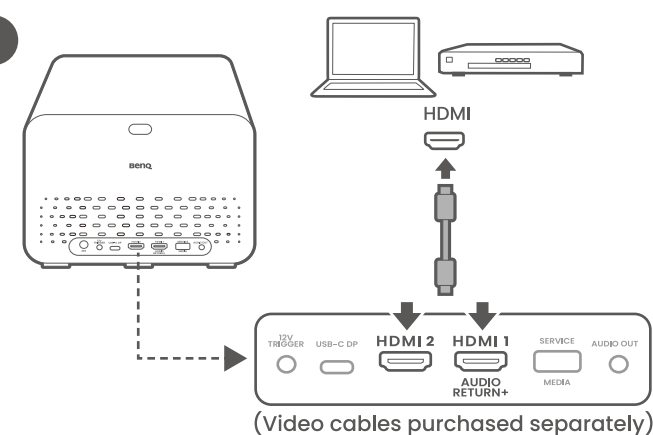
© 2025 BenQ Corporation.
All rights reserved. Rights of modification reserved.



4J.R0002.001 V1.02

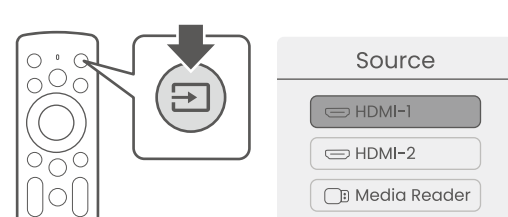
Video connection

1

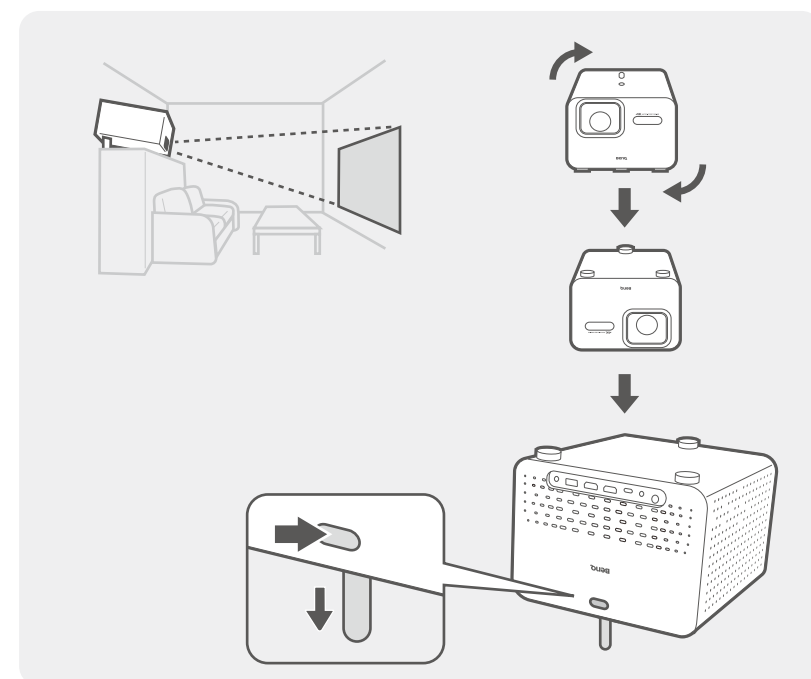


(Video cables purchased separately)

2



Upside down projection (with built-in adjustable foot)

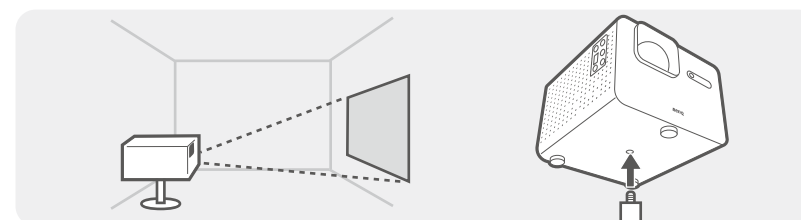


Mounting (optional)

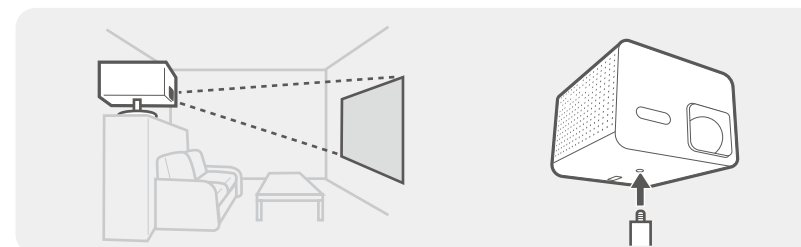
Tripod mounting

Screw type: 1/4"

Front projection

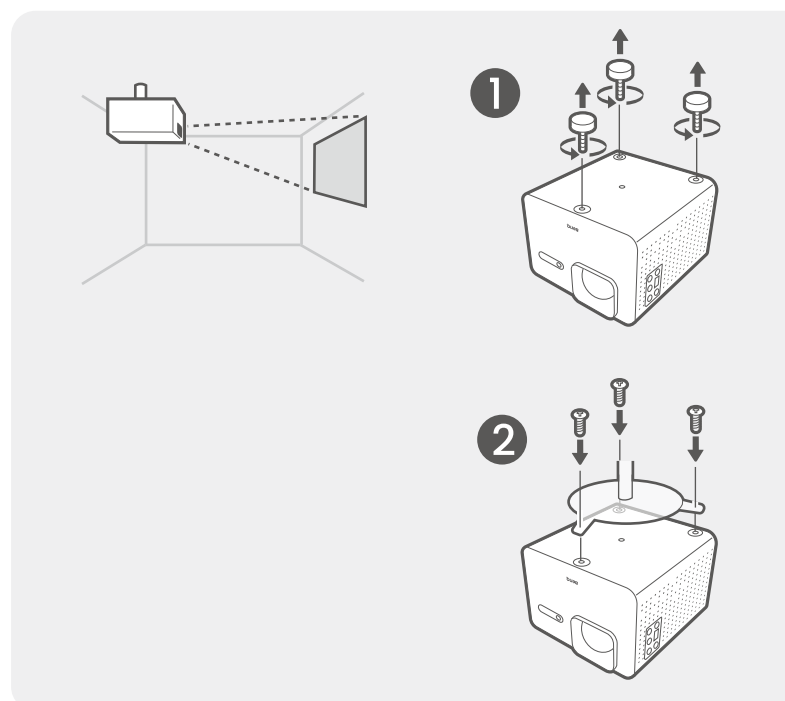


Upside down projection (with projector stand)

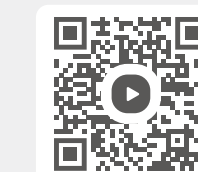


Ceiling mounting

Screw type: M4 / Compatible BenQ ceiling mount: CM00G3



BenQ



Easy start
with videos

Digital Projector Quick Start Guide

Home Entertainment Series | TK705ST1/i800ST